

**REDISTRICTING PLAN PRESENTATION  
CITY OF NEW BERN**

January 10, 2012



## REDISTRICTING DATA: 2010 FEDERAL DECENNIAL CENSUS CONDUCTED

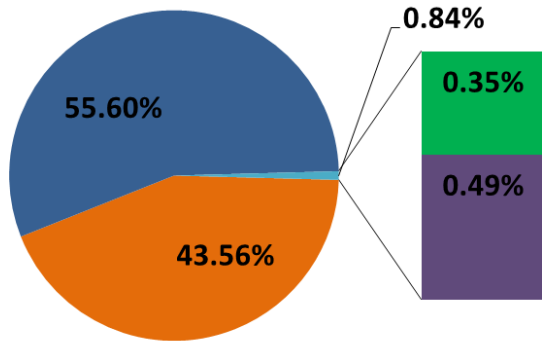
- April 2010 – U.S. Census found that the City of New Bern had grown 27% since the 2000 Census to 29,524.
- Further analysis found that the population within each Ward had gotten out of proportion or out of balance.
- As discussed back in June, GS 160A -23(b) allows for any municipality to adjust its boundaries to “correct population imbalances”. In addition, GS 160A – 23.1 states that with such imbalances we need to “as soon as possible after the Census, determine if it is lawful to hold elections or to determine if our districts (wards) are out of balance and correct these imbalances”.
- The Equal Protection Clause of the US Constitution requires that where districts (wards) are used – they must be substantially equal in population so that each person’s vote counts the same.
- With the 2010 population of 29, 524 – there should be approximately 4,921 people within each ward, instead we have wards ranging from 4,000 to 6,119 in size.



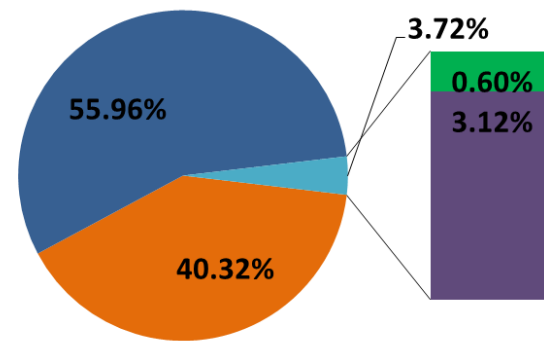
## CITY OF NEW BERN: CHANGES IN RACIAL DIVERSITY

Just as the total population for the City has changed significantly, so has the diversity of the City, especially related to Asian and Hispanic Populations

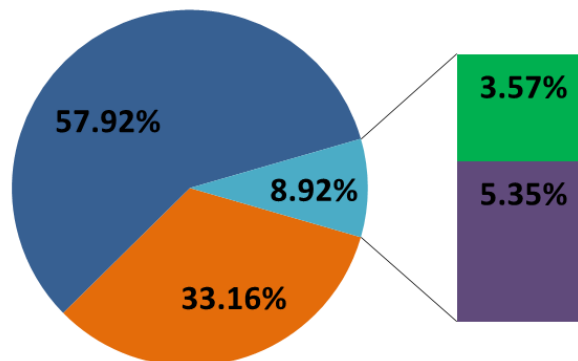
**Racial Makeup 1990 Census**



**Racial Makeup 2000 Census**



**Racial Makeup 2010 Census**



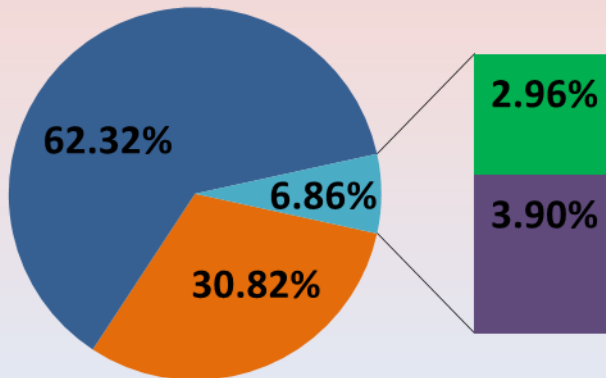
## ASSURING VOTER EQUALITY

- In determining new ward boundaries we must take race into account in order to avoid a violation of Section 2 of the Voting Rights Act of 1965.
- As a Section 5 jurisdiction – we must take race into account in making sure that there is no “retrogression” (make sure that after the changes it will not be more difficult for African American or Black voters to elect candidates of their choice than before).
- As shown, the racial diversity of the City has changed in the last 20 years. Not only has the African American or Black population shrunk as a percentage of the total population, the Asian and Hispanic population now makes up nearly a 10<sup>th</sup> of the total population.
- Based on the Census data, African American population accounts for 1/3 of the total population and slightly less than 1/3 of the total voting age population.
- The Board and staff, also considered as a part of the redistricting process the data that looks at population 18 and older or voter age by race.



## VOTING AGE POPULATION

### City of New Bern - 2010 Census: Population 18 and Older

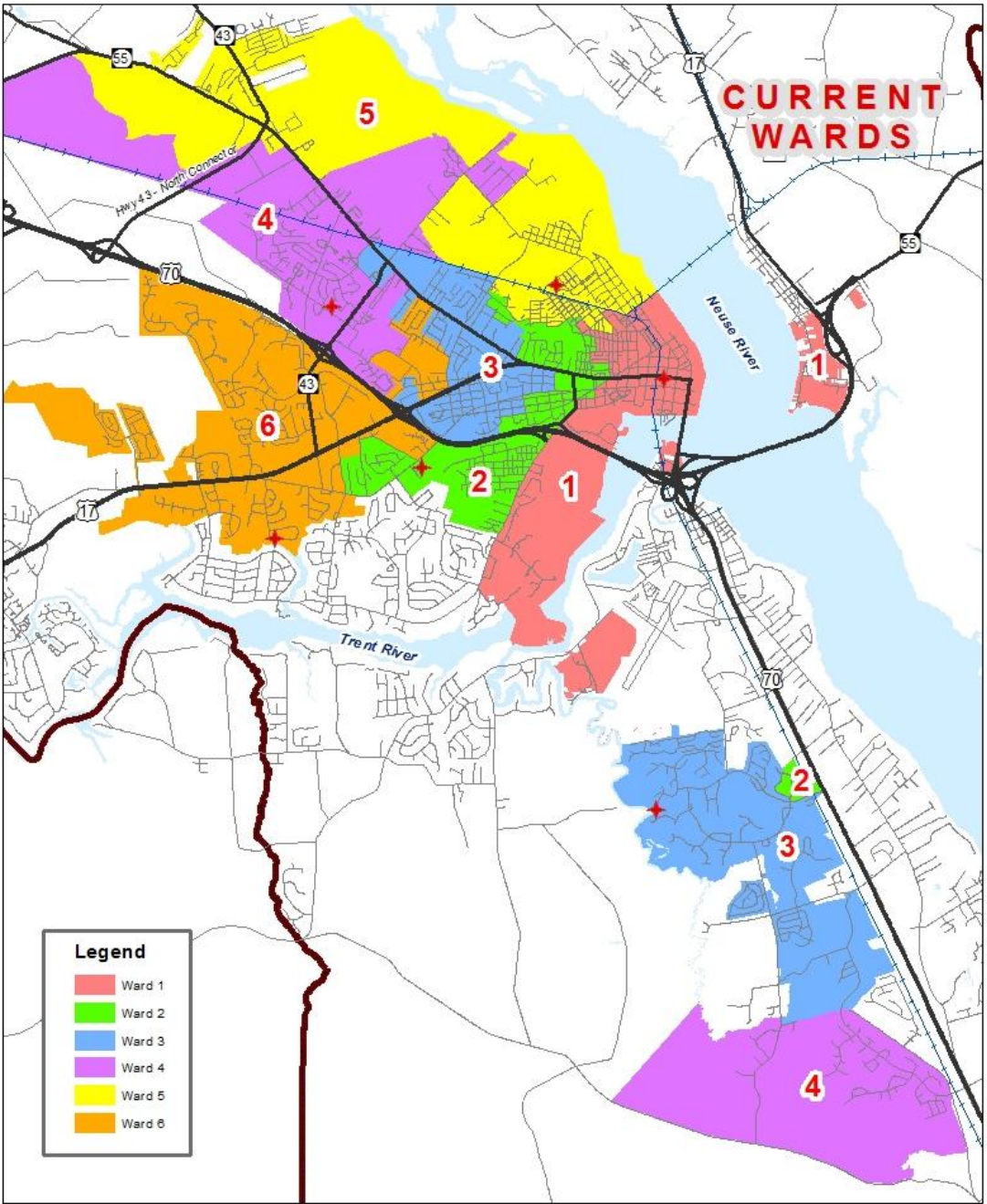


In the 2010 Census, it was found that 22,778 or 77.15% of the total population was age 18 or older or of voting age. Of that population:

- 62.32 % is White;
- 30.82% is African American or Black;
- 2.96% is Asian; and
- 3.90% is “Other” including Hispanic.



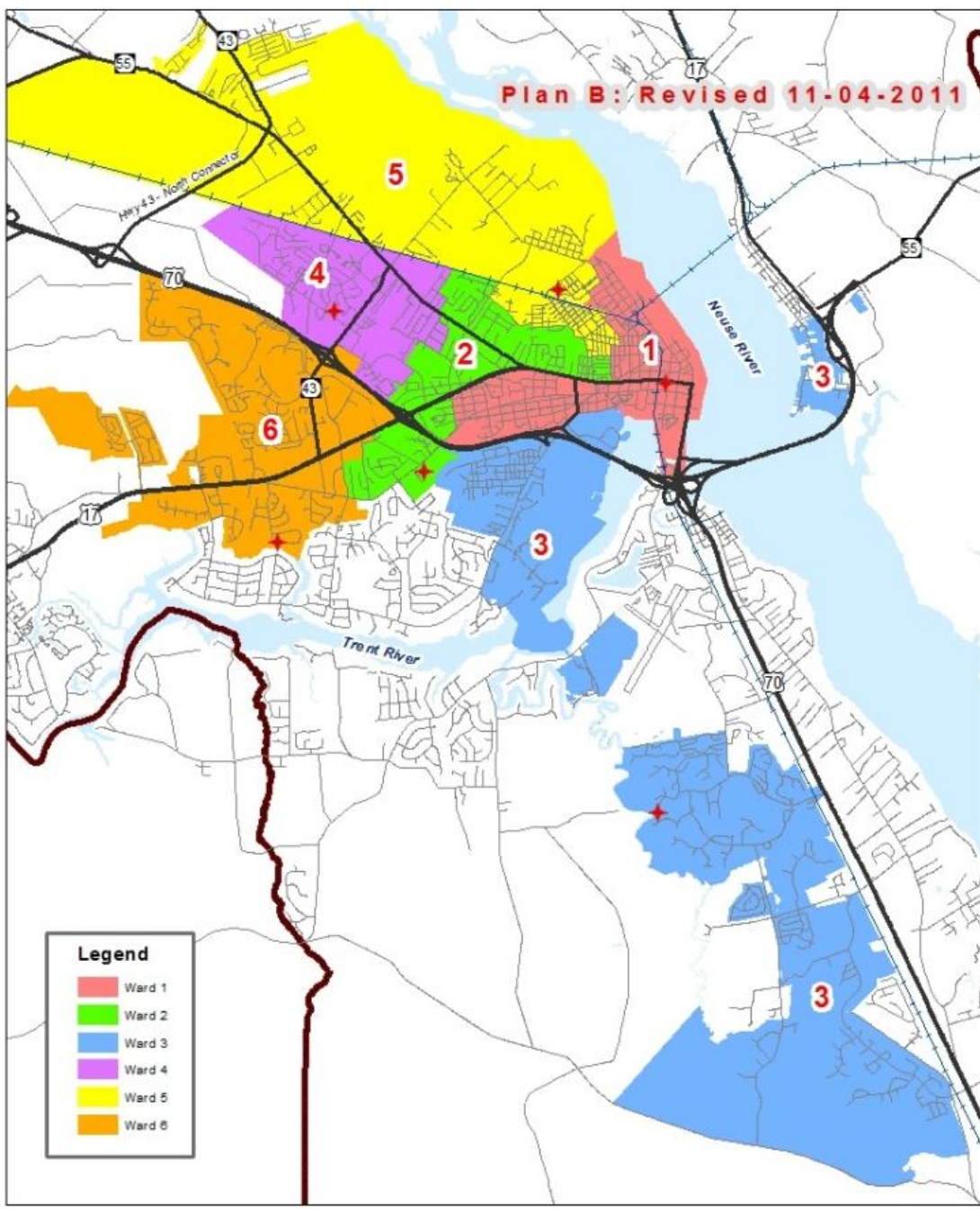
# CURRENT WARD BOUNDARIES



Ward	2010 Population	Optimum	Differ.
1	4,000	4,921	-921
2	4,005	4,921	-916
3	5,910	4,921	+969
4	6,119	4,921	+1,198
5	4,027	4,921	-894
6	5,463	4,921	+542



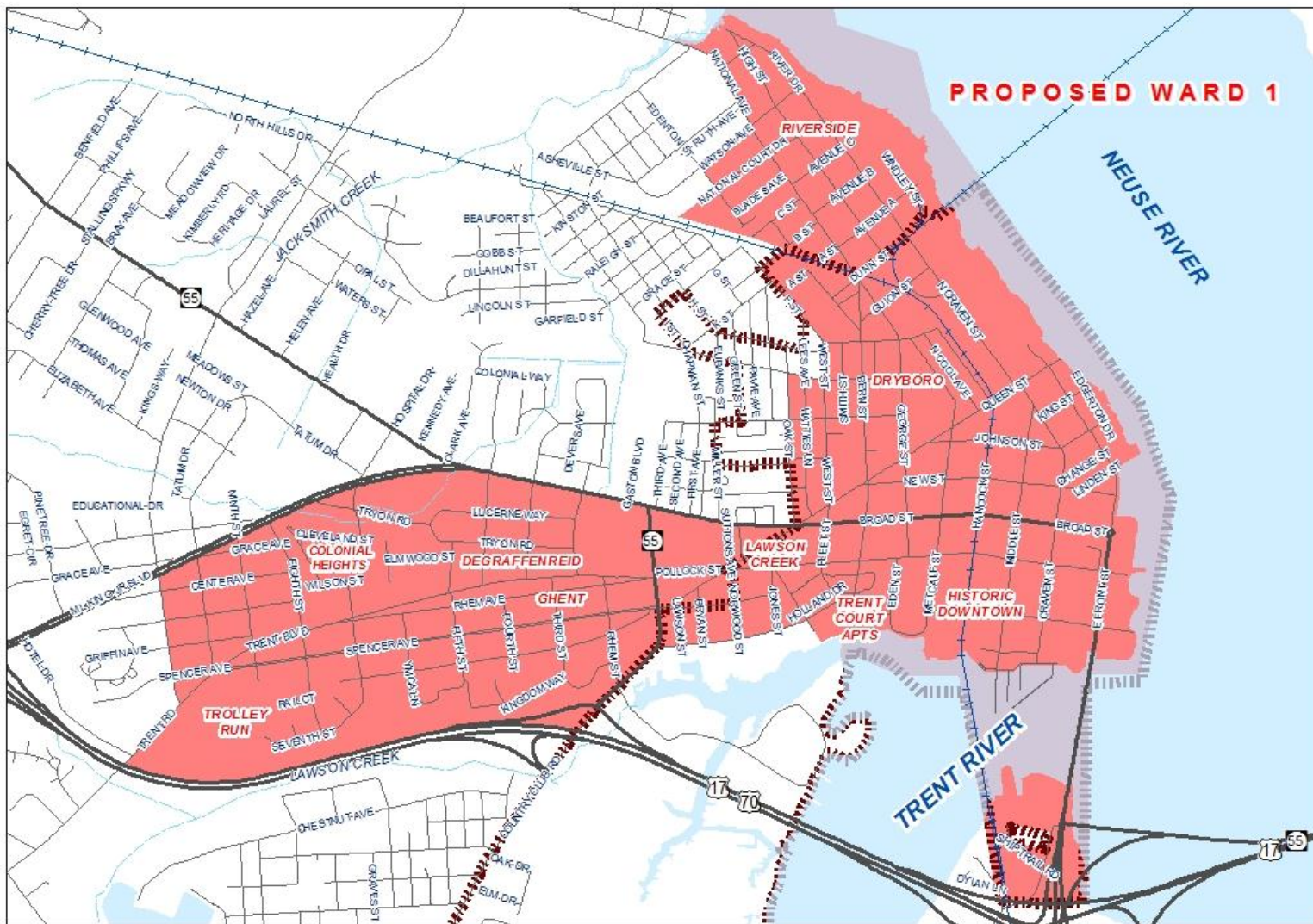
## PROPOSED REDISTRICTING PLAN



Ward	Prop. Pop.	Optimum	Differ.
1	4,804	4,921	-117
2	5,050	4,921	+129
3	4,760	4,921	-161
4	5,009	4,921	+178
5	5,031	4,921	+110
6	4,870	4,921	-51

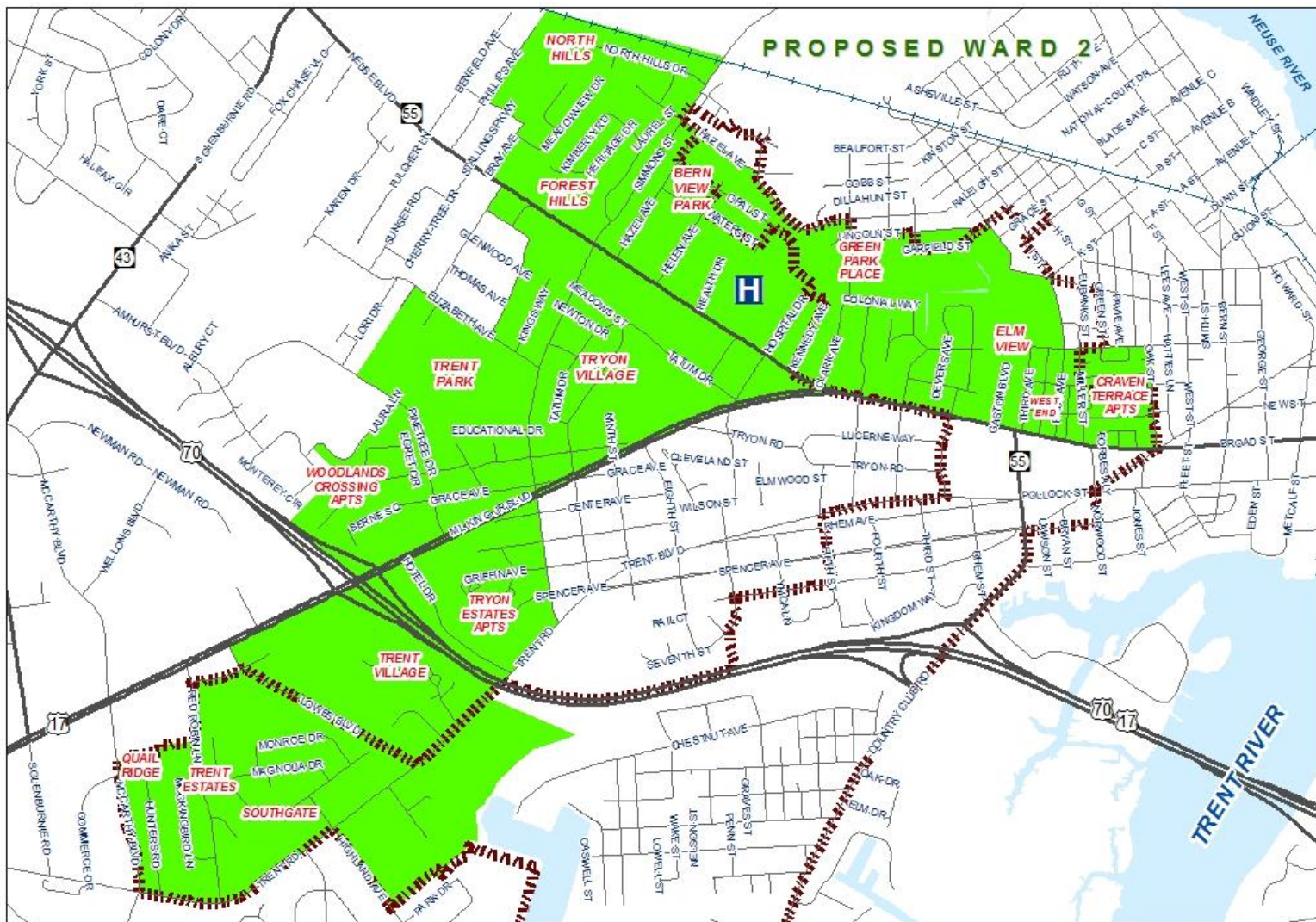


# PROPOSED WARD 1 – ALDERWOMAN BENGEL



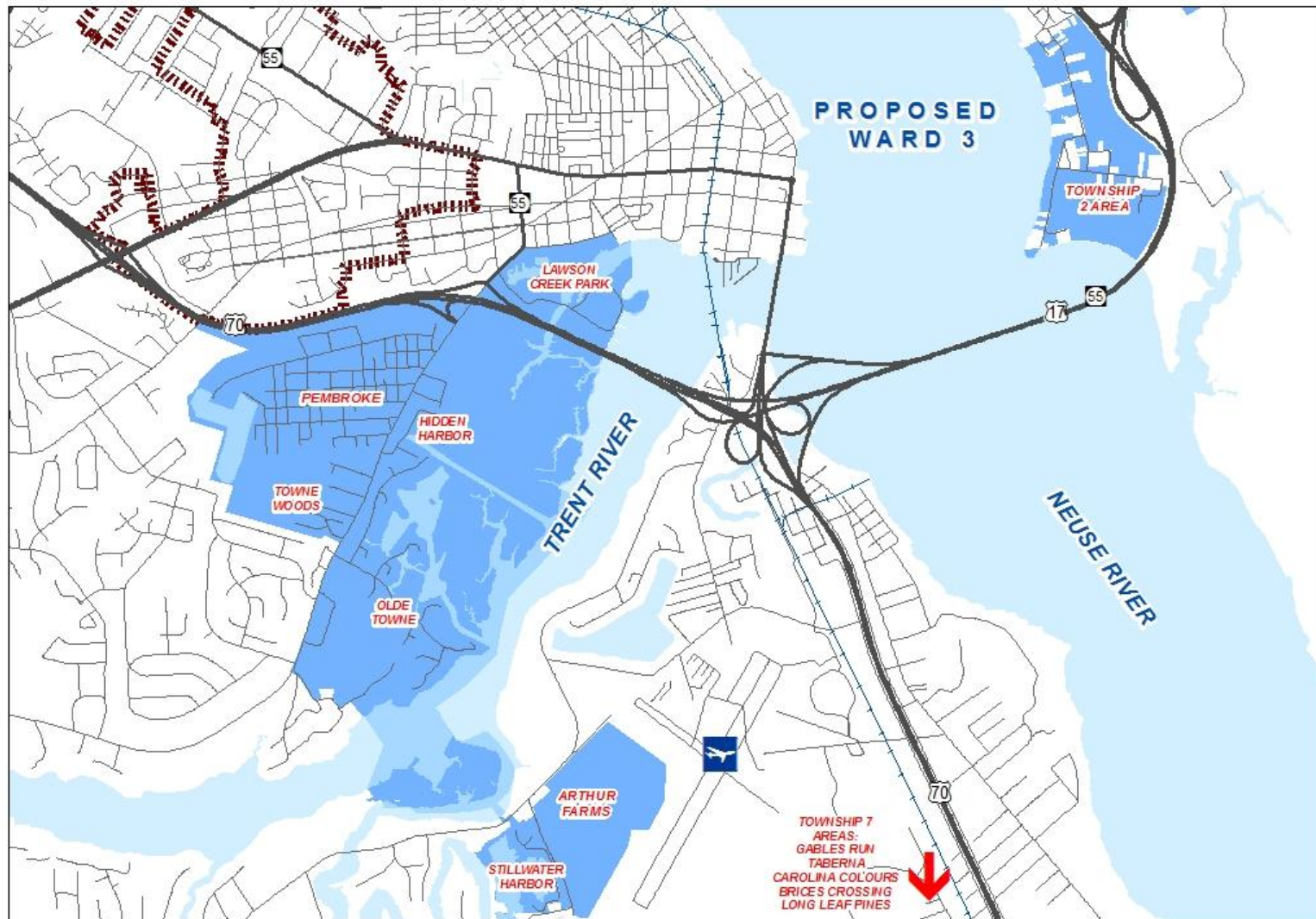
**Proposed Ward 1:**  
Approximate Size: 1.9 Sq. Mi.  
Total Population: 4,804  
White Population: 2,840  
African American Population: 1,650  
18+ Population: 3,843  
18+ White Population: 2,460  
18+ African American Population: 1,199  
Based on U.S. Census Bureau Redistricting Data

## PROPOSED WARD 2 – ALDERMAN TAYLOR



**Proposed Ward 2:**  
Approximate Size: 1.8 Sq. Mi.  
Total Population: 5,050  
White Population: 2,038  
African American Population: 2,465  
18+ Population: 3,813  
18+ White Population: 1,727  
18+ African American Population: 1,755  
Based on U.S. Census Bureau Redistricting Data

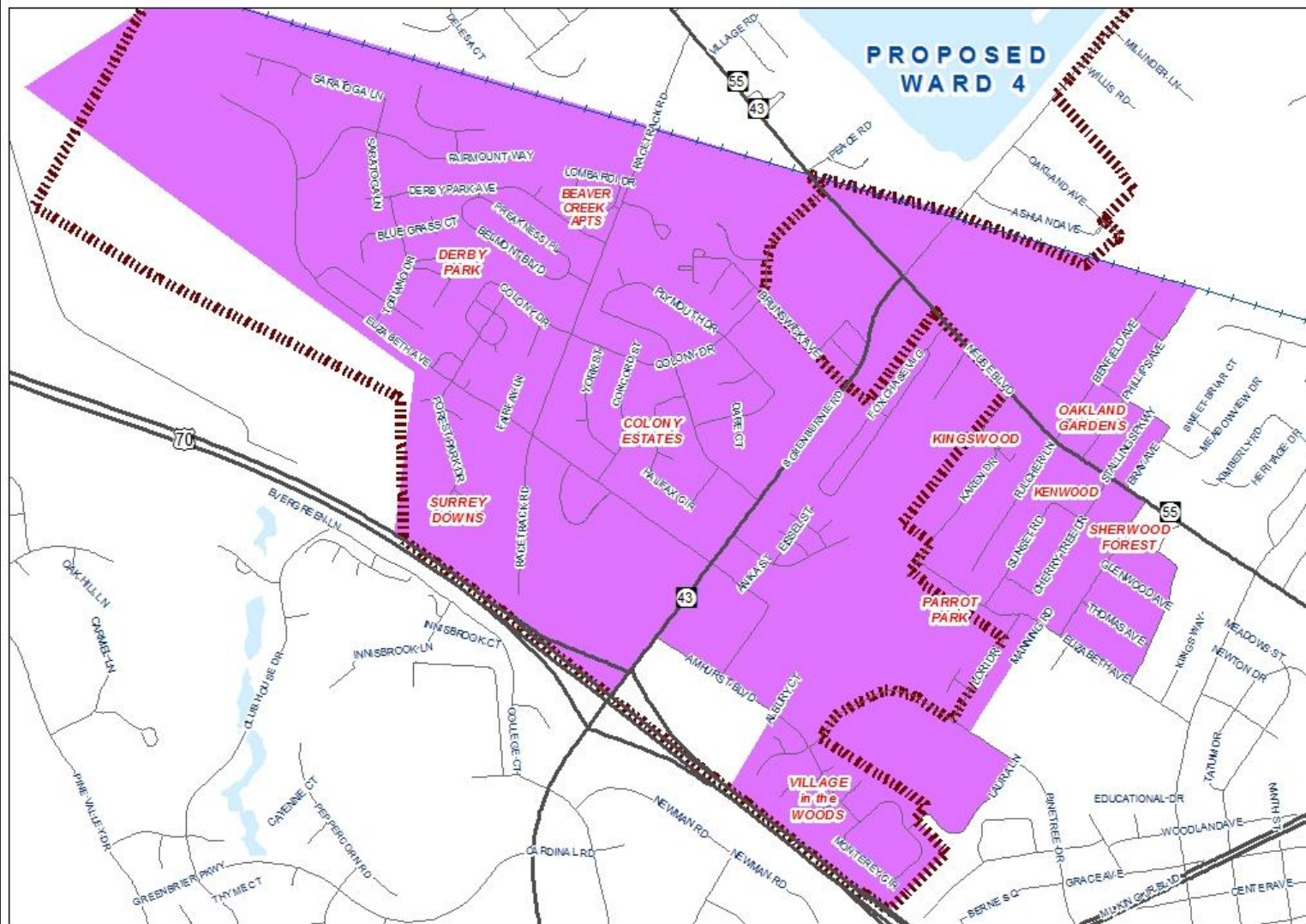
## PROPOSED WARD 3 – ALDERMAN BUCHER



### Proposed Ward 3:

Approximate  
Size: 9.5 Sq. Mi.  
Total Population:  
4,760  
White Population:  
3,392  
African American  
Population:  
1,150  
18+ Population:  
3,614  
18+ White  
Population:  
2,617  
18+ African  
American  
Population:  
865  
Based on U.S.  
Census Bureau  
Redistricting Data

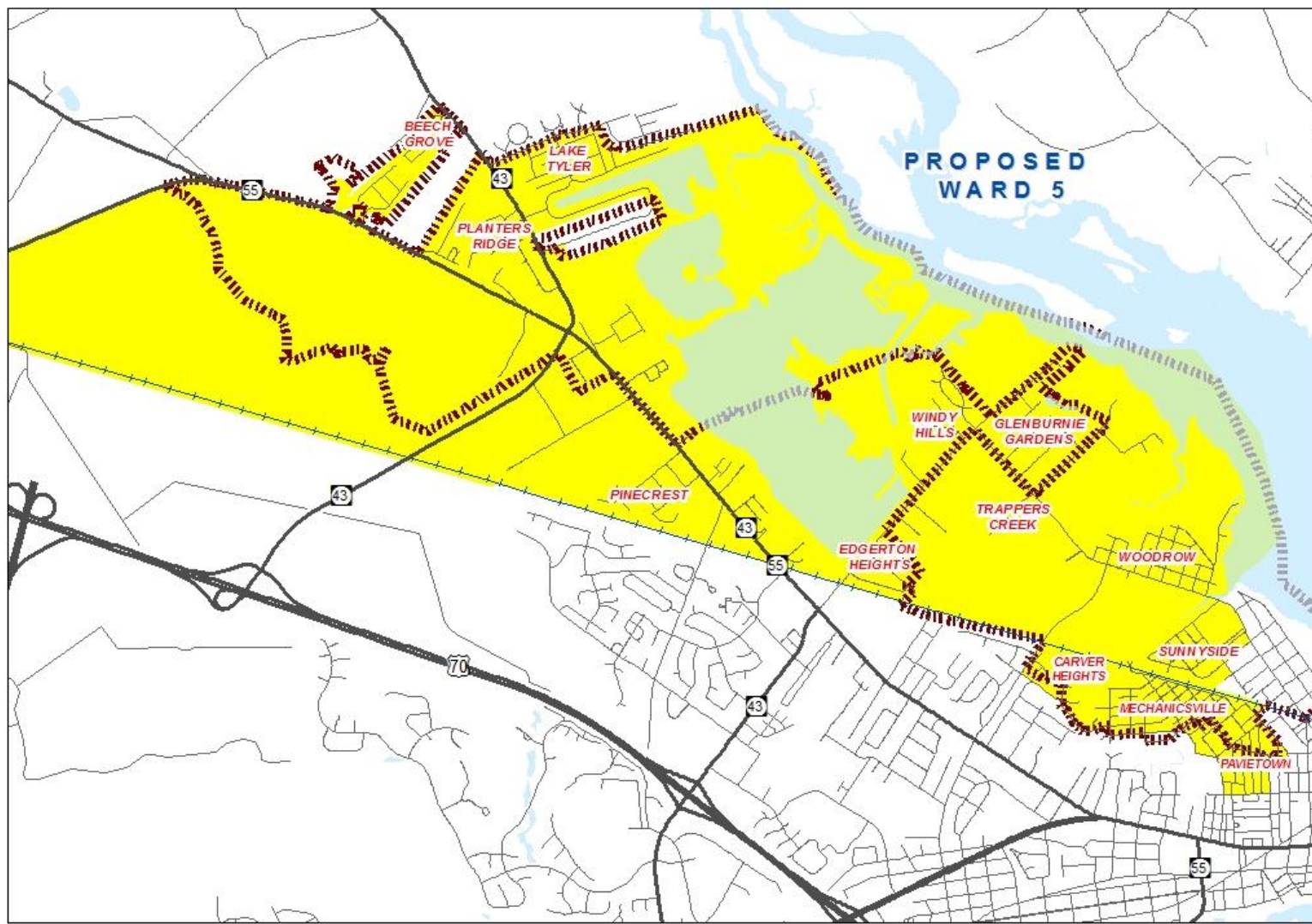
# PROPOSED WARD 4 – ALDERMAN KINSEY



## Proposed Ward 4:

Approximate Size: 2.1 Sq. Mi.  
Total Population: 5,009  
White Population: 2,925  
African American Population: 1,512  
18+ Population: 3,775  
18+ White Population: 2,412  
18+ African American Population: 1,113  
Based on U.S. Census Bureau Redistricting Data

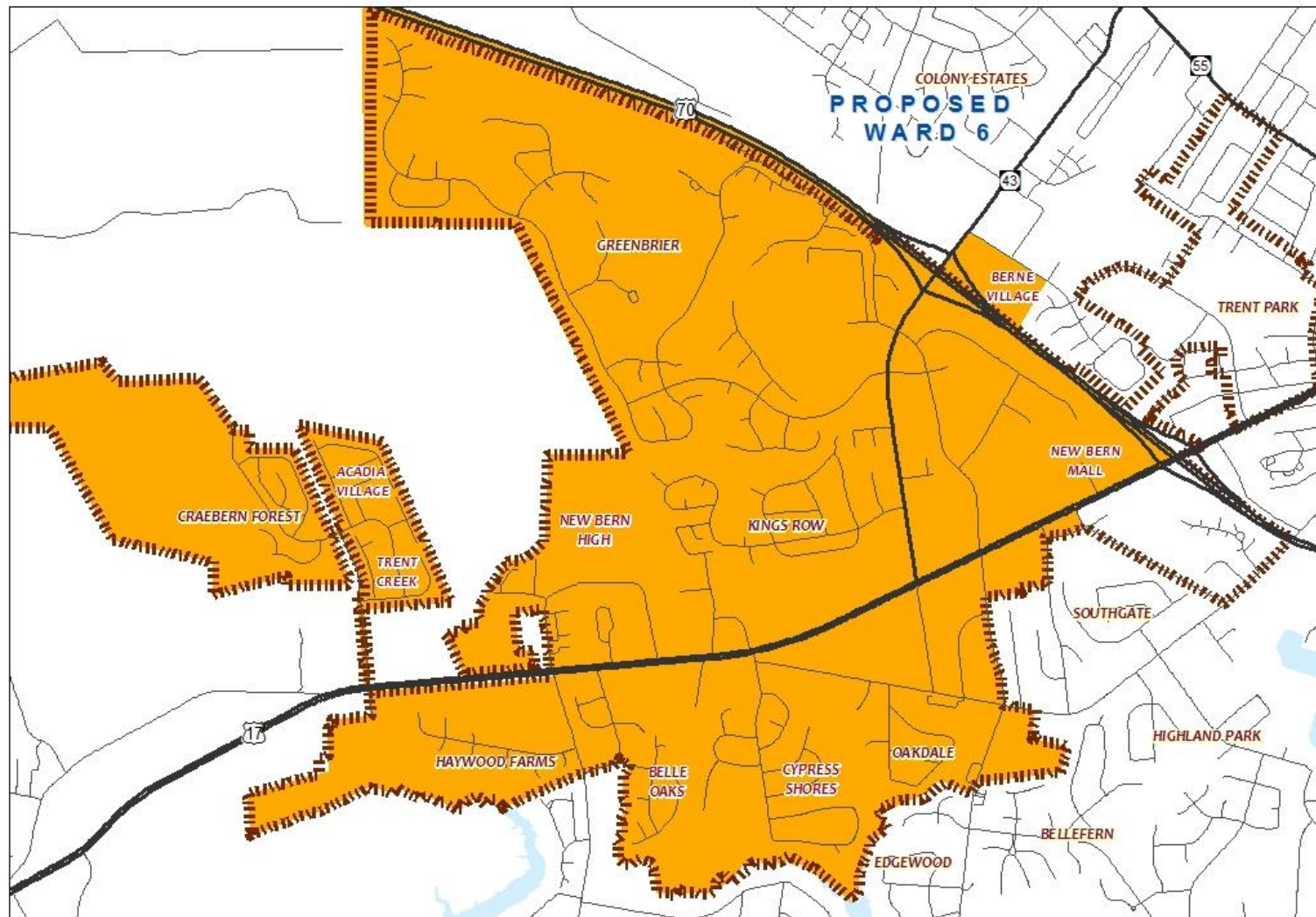
## PROPOSED WARD 5 – ALDERMAN WHITE



### Proposed Ward 5:

Approximate  
Size: 8.5 Sq. Mi.  
Total Population:  
5,031  
White Population:  
1,929  
African American  
Population:  
2,375  
18+ Population:  
3,596  
18+ White  
Population:  
1,534  
18+ African  
American  
Population:  
1,631  
Based on U.S.  
Census Bureau  
Redistricting Data

## PROPOSED WARD 6 – ALDERMAN OUTLAW



### Proposed Ward 6:

Approximate  
Size: 4.3 Sq. Mi.  
Total Population:  
4,870  
White Population:  
3,964  
African American  
Population:  
638  
18+ Population:  
4,057  
18+ White  
Population:  
3,444  
18+ African  
American  
Population:  
457  
Based on U.S.  
Census Bureau  
Redistricting Data

## NEXT STEPS

### Receive Final Input – Citizens & Board

Prepare Final Plan

Final Plan and Data Submitted

### Submittal by City Attorney to DOJ

Voting Rights Act: Sect. 5 Jurisdiction

Avg. 60 Days Pre-Clearance

### Adopted by Board of Aldermen

Work with Board of Elections

New Wards take Effect

# QUESTIONS?

Comments or Questions:

Alice C. Wilson, AICP, GISP

GIS Coordinator

252-639-7588

Email: [gis@newbern-nc.org](mailto:gis@newbern-nc.org)

Physical Address: 3<sup>rd</sup> or 4<sup>th</sup> Floor

Dunn Building - 248 Craven Street

Diagonally Across from City Hall

Digital Copy of Plan at [www.newbern-nc.org](http://www.newbern-nc.org)

Large Wall Map – 1<sup>st</sup> Floor of the Dunn Bldg. – Next to Elevator